



CONNECTING  
COMMUNITY SPIRIT



INNER WEST  
neighbour  aid

ANNUAL REPORT  
2011-2012





# CONTENTS

- 02** Connecting Community Spirit
- 03** About Inner West Neighbour Aid
- 04** Our Organisation
- 06** Highlights for 2011 – 2012
- 07** Governance
- 08** Our Volunteers
- 10** Chairperson's Report
- 11** Management Report
- 13** Our Programs
- 17** Our Staff
- 18** Thank you to our Funding Bodies and Supporters
- 19** Treasurer's Report
- 20** Audited Financial Statements
- 23** Please Donate - Living...Connecting...Community Spirit
- 24** Acknowledgements



## CONNECTING COMMUNITY SPIRIT

Inner West Neighbour Aid contributes to our vibrant local community, where people of all ages live, work, learn and play. We aim to connect with like-minded people, local businesses, Clubs and Councils, who are keen to make a difference in our Inner West.

We currently provide services to over 740 older people, people with disabilities and their carers living in the Inner West. Together with our 125 volunteers, we will continue to build our services to meet the demands of the ageing population.

Community spirit is that feeling of belonging to a group, a sense that we are not alone, but that we are here to share something of ourselves with each other. We look forward to sharing this amazing sense of community spirit with you.

## ABOUT INNER WEST NEIGHBOUR AID

### Our Mission

Inner West Neighbour Aid enhances community spirit by providing social support and home assistance to older people, people with disabilities and carers in our local area. We connect people who are passionate about helping others with people who need support to live safely and independently at home and remain active in our community.

### Our Vision

Supporting our community to live independently for longer.

### Our History

Inner West Neighbour Aid has provided services to older people, people with disabilities and their carers since 1992. The organisation was originally funded by the Department of Ageing and Disability and was auspiced by Ashfield Community Resources Incorporation. At that time we were located at the Lethington Community Centre in Summer Hill.

In 1994, Inner West Neighbour Aid became incorporated and provided services to 70 clients with the help of 41 volunteers and 3 staff. For the financial year ended 30 June 1995, income totalled \$61,566 and net assets were \$11,359. The office had transferred to Ramsay Hall, owned by St David's Uniting Church in Haberfield.

By 2002, Inner West Neighbour Aid had launched its Garden Aid service and the client base was at 100 with 84 volunteers and 4 staff. For the financial year ended 2002, total income was reported at \$185,307 and net assets were \$2,078.

Today, we are located on the grounds of Croydon Park Public School in a refurbished office space with 10 staff and 125 volunteers.

We are providing services to over 740 clients, through a total revenue base of \$821,878 and net assets worth \$212,546. We have 14 programs that fall under the umbrella of Social Support and Home Maintenance services.



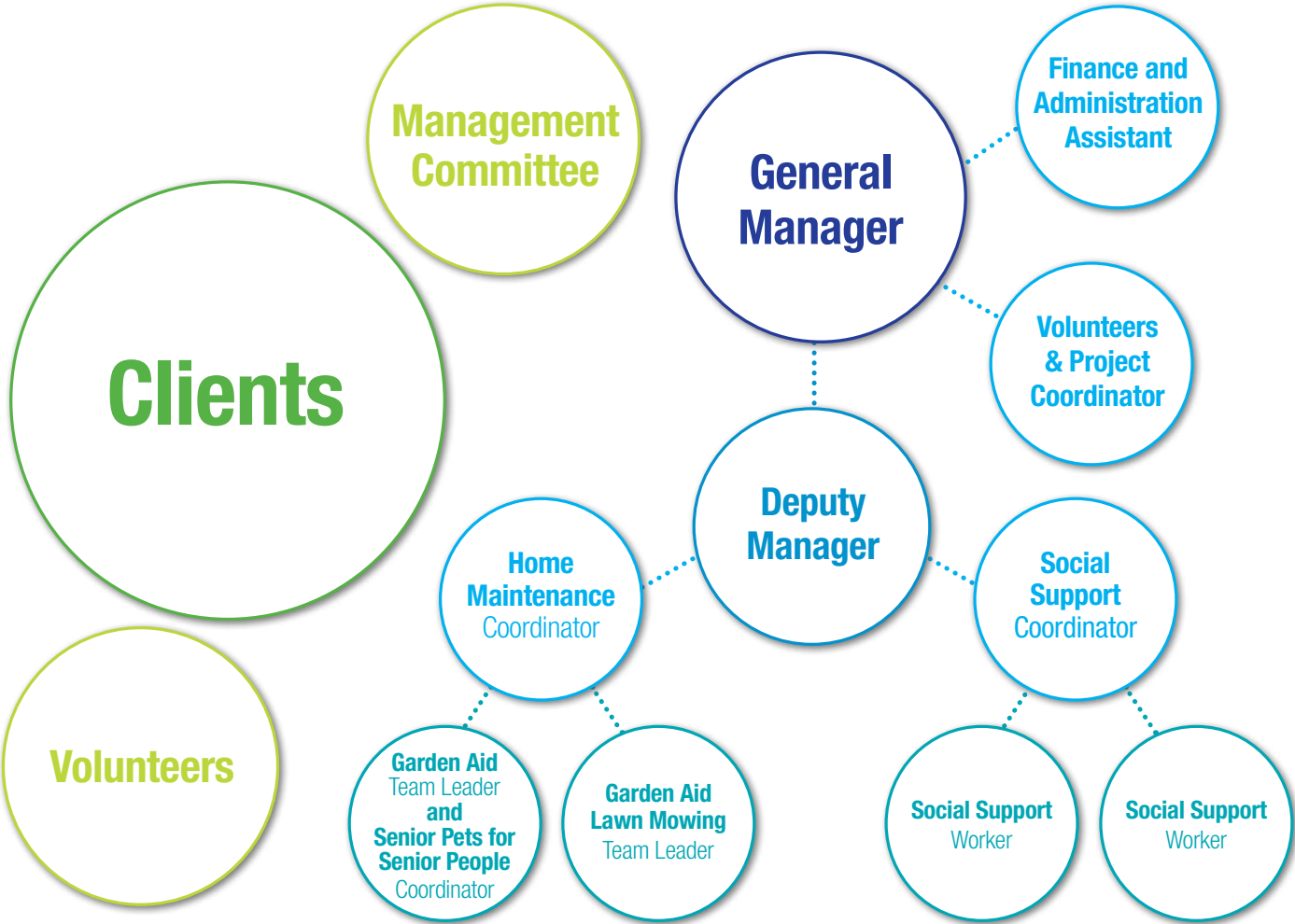


## OUR ORGANISATION

Inner West Neighbour Aid is a not for profit community organisation that is governed by a volunteer Management Committee.

It employs a team of 10 staff to coordinate and manage the projects and business activities as well as to recruit, supervise and mentor 125 volunteers. Our clients are central to our services and everything we do.

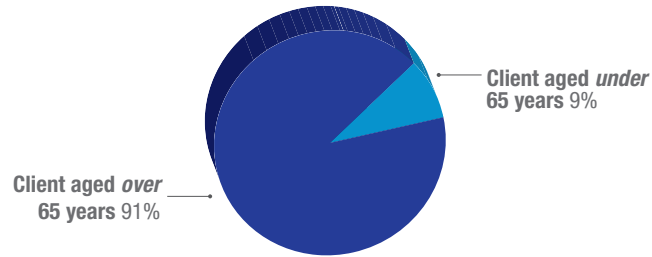
Together with our volunteers, staff and Management Committee we connect and breathe community spirit into the lives of our clients.



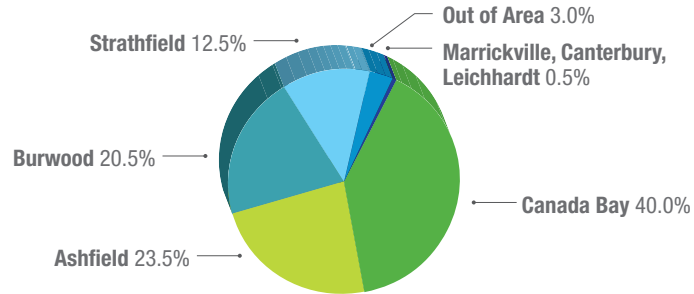
## HIGHLIGHTS FOR 2011 – 2012

- Assisted 678 people over 65 years of age living in the Inner West
- Supported 745 people within the target group including frail older people, people with disabilities and carers
- 120 new referrals across both Social Support and Home Maintenance
- Supported people with origins from over 50 different countries, speaking 27 different languages
- 14 different programs (11 programs in the previous financial year)
- 10 staff members and 125 volunteers (8 staff members and 77 volunteers in the previous financial year)
- \$821,878 turnover (\$773,004 in the previous financial year)
- \$15,343 in Local Club and Council Grants

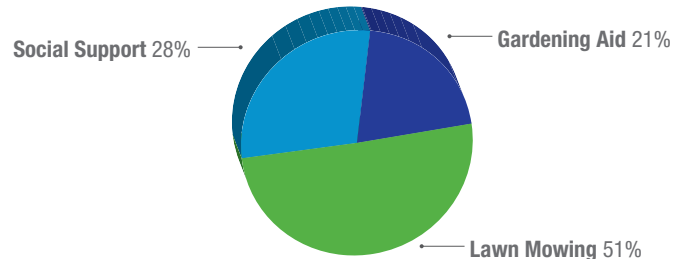
### CLIENT BY AGE



### CLIENT BY LOCAL GOVERNMENT AREA



### SERVICES ACTUALLY RECEIVED





## GOVERNANCE

Inner West Neighbour Aid is an incorporated association and is governed by a volunteer Management Committee. The Management Committee actively contributes to the overall strategic direction, legal, contractual and compliance decisions facing the organisation.

**Betsey Brister** Chairperson and Public Officer

**Diana Temby** Secretary

**Noel Nallaiah** Treasurer

**Luke Bo'sher** Government Representative

**Val Day** Volunteer Representative

**Beverley Garry** Client Representative

**Kimberley Glavas** Service Representative  
*Resigned*

**Philip Kirby** Volunteer Representative

**Monica Matisan** Treasurer  
*Resigned due to family commitments*

**Patricia Morson** Client Representative



## OUR VOLUNTEERS



**Vale Ray Cullen**  
*13 January 1956*  
*– 20 May 2012*

The value of volunteering is immense and irreplaceable. At Inner West Neighbour Aid we cannot thank our fantastic volunteers enough. Our volunteers are essential to our organisation and allow us to provide more services to more clients.

Many thanks to our volunteers for the important role that they play in our community and we commend them for donating their time and energy to helping others.

This year was a fantastic one for volunteering. In 2010-2011, Inner West Neighbour Aid had 77 volunteers and over 2011-2012 our volunteer workforce swelled to 125.

We are pleased that so many of our long term volunteers remain active and involved, and we took the opportunity to recognise their long service to the community during National Volunteer Week. Our goal is to encourage each of our volunteers to grow and learn with us, and to remain engaged with the community in the long term.

Over the course of the year, we provided professional training to 23 volunteers, held a number of volunteer recognition functions, and also instituted the Inner West Neighbour Aid Volunteer quarterly award. This award recognises volunteers for their exceptional community service through volunteering. The inaugural winner was Olga Nowicka who, along with subsequent recipients Joe Szima and Leo Zande, reflects the dedication, reliability and community spirit that we seek from volunteers.

### **Vale Ray Cullen**

*13 January 1956 – 20 May 2012*

Ray began volunteering with Inner West Neighbour Aid in 1995 and was our longest serving volunteer with over 16 years of experience. Ray was a dedicated volunteer who left an indelible impression on all who met him. Ray's service to his community will be remembered by the Inner West Neighbour Aid family for many years to come. His humour and generosity will be greatly missed.

## **10 Years + Service**

Betsey Brister  
Ray Cullen  
Rosemary Everett  
Jennifer Mines  
Trisha Molinari

## **5 Years + Service**

Ron Allan  
Simone Ancilleri  
Tuisong Hie  
Brendan Flynn  
Graham Knight  
Tricia Meissner  
Maureen Mitchell  
Lawrence Tsang  
Paul Wayland

## **2 Years + Service**

Gabriella Abdallah  
Anne-Marie Costantino  
Val Day  
Les Dow  
Colin Dunn  
Helen Forstmann  
Benjamin Gock  
Sarah Houlahan

Deborah Jackson  
Allan Jones  
Sarah Moxon  
Nimmert Narulla  
Sorcha O'Neill  
Ron Pond  
Mary Purnell  
Arsanious Rizkalla  
Graeme Sobels  
Diana Temby  
Maria Volkens  
Leela Wesiak  
Jing Xu  
Xiaoyan (Lisa) Yao  
Leo Zande

## **1-2 Years Service**

Carima Ammar  
Chelsea Anderson  
Raj Baldev Batra  
Christine Blackeby  
Jade Campbell  
Mee-Ching Chin  
Anne-Marie Constantino  
Shweta Dhawan  
Emily Hasler  
Craig Kann

Mi Sun Kim  
Philip Kirby  
Ada Soi Kun Chow  
Jane Ledwidge  
Monica Matisan  
Bao Ngan (Jenny) Nguyen  
Narelle Roseworn  
Irene Ryu  
Matt Sanders  
Damien Smith  
Joe Szima

## **New Volunteers**

Aram Akopyan  
Carima Ammar  
Wayne Ardley  
Antonella Ball  
Cath Besly  
Bharat Bhushan  
Louis Blanchart  
Luke Bøsher  
Danielle Bragg  
Andrew Bromage  
Simon Bromage  
Helen Chan  
Nicole Chow  
Sean Flarrey

Amy Fisher  
Cherie Flarrey  
Jess Francis  
Adriana Franic  
Beverley Garry  
Bronwyn Geary  
Stef Gimenez  
Justine Hamilton  
Lateisha Harlender  
Sarah Harlender  
Deborah Harris  
Deborah Harrison  
Tania Harrison  
Kristina Hewetson  
Katherine Higgins  
Lee Holloway  
Amy Hong  
Jessica Jacobs  
Roslyn Jorgensen  
Kathy Kontellis  
Lisa Leotta  
Alison Lewis  
Isabella Low  
Eileen McCauley-Winter  
Kate McGinniskin  
Angela McKeen  
Stephanie Mair

Vimala Mariappan  
Cintia Martinez-Garduno  
Vicki Massey  
Amanda Moloney  
Julie Moloney  
Nikki Moloney  
Natalie Moore  
Patricia Morson  
Noel Nallaiah  
Danielle Nasr  
Tess Noble  
Olga Nowicka  
Seil Oh  
Annie Pho  
Lehman Reti  
Zealand Reti  
Aurelia Roper-Tyler  
Renee Sadler  
Hannah Smith  
Yin Sun  
Ester Surrija  
Meg Wimberley  
Wayne Wormald  
Jenny Young  
Wonmi Yun  
Wen Rong (Vera) Zhao



## CHAIRPERSON'S REPORT

### Chairperson's Farewell Speech

Once again I have managed to plan an overseas trip that coincides with the Annual General Meeting. Diana Temby has very kindly agreed to tender my greetings to you all. This is my last year as Chairperson and I am so happy to turn it over to Diana's more than capable hands.

We have had a lot of changes in the last couple of years. Rebecca Holland took over when Kylee Blackwell left, and was doing a fantastic job when her boyfriend lured her away from us and back to London. Most of you will know by now that Rebecca and Max are expecting twins and I'm sure we all wish her an uneventful pregnancy and easy birth. And beautiful babies!

We count ourselves as truly fortunate that we found Allison just at the time that she was looking for a job closer to home. She has picked up everything she needed to know very quickly, and is taking the agency forward in leaps and bounds. This is a time of growth in the aged care industry, and Allison is going to lead us to the head of the queue.

There will probably be some big changes to come in the way things are done, but you, our clients, are the reason for our existence and we will continue to serve you in the best ways possible.

I have enjoyed my term as Chairperson of the Management Committee and plan to keep volunteering for as many years as I am able.

*Cheers,*

**Betsey Brister** *Chairperson*



## MANAGEMENT REPORT

The financial year ended 30 June 2012 was a year of stability, strength and innovation. Through our services, planning and people, Inner West Neighbour Aid has continued to lay the foundations for future growth. Everything we think, say, promise and do is driven by our vision to support our community to live independently for longer. We share this vision with our volunteers, supporters, partners and funding bodies. The theme for this Annual Report is *Connecting Community Spirit*. One of our strengths is that we are well placed to bring together people of all ages, abilities, cultures and interests to create new connections. In life, we learn how to value all of our experiences and hold onto those special connections that are meaningful.

### Funding Update

Prior to the end of the financial year, we received our 3 year funding contracts from the Department of Health and Ageing, and the Department of Family and Community Services. These contracts provided greater clarity around our responsibilities for quality

and person-centred services and form the basis of the aged care reforms effective from 1 July 2012.

From 1 July 2012 the Department of Health and Ageing assumed operational responsibility for Home and Community Care (HACC) services for older Australians in most states and territories under the new Commonwealth HACC Program. The NSW Department of Family and Community Services continues to fund and administer HACC services for people under the age of 65 and Aboriginal and Torres Strait Islander people under 50. For Inner West Neighbour Aid our split of HACC funding is 94% from the Commonwealth and 6% from the State Government.

The new HACC arrangements are part of the foundations that will support the effective implementation of the *Living Longer Living Better* aged care reform package. Helping older Australians to stay at home is one of the key focuses of the reforms, with the government allocating \$955.4 million to this goal, including \$75.3 million toward

the establishment of a comprehensive basic Home Support program from 1 July 2015. The Home Support program is intended to combine all programs and services currently providing basic home support, including the Commonwealth HACC Program.

### Management Changes

Thank you to my predecessor, Rebecca Holland, who left Inner West Neighbour Aid in May for a new overseas adventure involving marriage, travel and starting a family. I extend my congratulations to Rebecca for her dedication and strong leadership during her 17 months as Manager. For my part, it's great to be here. I have worked at various medium to large not-for-profit organisations, mainly in the disability, aged care and youth at risk sectors. I share with Inner West Neighbour Aid my business, management consulting, organisational and strategic planning skills. I am looking forward to the next period ahead for the sector and understanding the service system and needs of the Inner West community.

## Organisational Changes

In May to June 2012, a mini organisational restructure was discussed and implemented. This prompted a review of Job Descriptions and led to greater streamlining of roles and responsibilities amongst our team of 10 paid staff, 8 of whom are employed on a part time basis. We then had the opportunity to amend the organisation's Mission Statement, to better reflect our sense of community spirit.

During the last 12 months, there has been considerable development of internal systems and supports. The new Inner West Neighbour Aid website was officially launched in April 2012. This enabled us to promote our new brand. This also included development of a suite of promotional brochures.

There were also significant changes to the office space, made possible by a grant from the Department of Veterans' Affairs. The original office space was transformed into an open plan work area with new office furniture and a separate community space for group activities.

In addition, a new vehicle was purchased to support the activities of Garden Aid. This purchase was supported by Fantastic Furniture and other grants.

## Thank You

In order to implement positive changes and lead an organisation effectively, there must always be a great team. I thank the fantastic Inner West Neighbour Aid team that consists of our Management Committee, our volunteers and dedicated staff. The Management Committee have a mix of new and longer standing members and it is refreshing to work with a range of people who each hold different insights and wisdom. Thank you to Betsey Brister and Diana Temby for their continued support and belief in the team. You are both inspirational in the way you display your capacity to share your skills and knowledge with Inner West Neighbour Aid.

Thank you to our clients and their families who share with us their remarkable stories and lives. We are reminded every day that through our connections, we grow stronger.

## The Year Ahead

As we embark on a new calendar year, we will continue to move forward with our strategic planning, continuous improvement of internal systems, development of programs and partnerships as well as risk management processes. We will continue to keep abreast of the aged care reform agenda and establish ourselves within various networks. We look forward to these challenges and know that together, we will go from strength to strength.

**Allison Yee-Brogan** *General Manager*

## OUR PROGRAMS

### HOME MAINTENANCE SERVICES

Home Maintenance is defined as assistance to keep a person's home in a safe and liveable condition. At Inner West Neighbour Aid our Home Maintenance services include Garden Aid and our subsidised Lawn Mowing program.

#### Garden Aid

Our Garden Aid teams bring gardens back to life for eligible people who live in their own home, but can no longer maintain their own gardens or afford professional gardening services. A qualified Garden Aid Team Leader works with a team of "green-thumbed" volunteers to ensure that gardens are brought back to a stage where they are attractive, can be enjoyed safely and are manageable with minimal upkeep.

This annual service includes weeding, pruning and laying newspaper for mulching, depending on the garden requirements which will be assessed by one of our Garden Aid Team Leaders.

This year our Garden Aid teams visited 158 gardens. We achieved this with the support of 35 Garden Aid volunteers. The Garden Aid service boasts the longest standing volunteers within Inner West Neighbour Aid, as it brings together individuals with the common interests of gardening and giving of one's time.

#### Lawn Mowing Services

This program assists clients with the ongoing maintenance of lawns through professional lawn mowing. We provide a list of professional and screened contractors to mow lawns on a regular basis.

Eligible clients receive a \$20 subsidy per cut to contribute towards the lawn mowing costs. Lawns are cut up to a maximum of 18 times per year.

This year we entered into 10 contracts with independent reputable lawn mowing companies. Together, we reached 382 households and their lawns.

"The Garden Aid Team are amazing.  
Thank you, thank you, thank you.  
It's marvellous - the garden!!  
Marvellous."

**"I cannot thank you enough!  
What a difference."**

"Truly is remarkable what the  
Garden Aid Team have done.  
Thank you."

**"Superb – I can't believe the  
transformation. "**

"A miracle. I cried with happiness when  
I saw the transformation in my garden."

**"From jungle to paradise!  
Thank you, my house now  
looks "lived in"."**

"The garden has never looked so good  
- it's beautiful."

## SOCIAL SUPPORT

Our Social Support service encourages participation in community life. The focus is on socialising and friendships to suit individual needs and may include home visiting services, group outings, telephone based monitoring services, assistance with shopping and other related activities. In 2011 – 12 our Social Support service continued to grow and develop as we introduced a number of innovative projects. We are encouraged by the support received by clients, other agencies and the general community. In 2011 – 12 we received 120 new referrals across the organisation.

### Senior Pets for Senior People

Senior Pets for Senior People matches older people with mature pets. In partnership with Sydney Dogs and Cats Home, we match people who are interested in adopting or fostering a mature dog or cat to individual needs and preferences. Pre-placement medical checks, including de-sexing and vaccinations are carried out prior to matching. Volunteers are also linked in if a client requires basic assistance with their pets, which may include walking and grooming.

This year we matched 25 people with mature pets. This was the first year of operating the Senior Pets for Senior People program and it has been well received by the community with considerable local media attention.

### Mini-Outings

Our Mini-Outings are a chance for groups of friends and new acquaintances to get out and about and reduce social isolation. These outings are planned in advance, taking into consideration interests, mobility needs, costs and current events. They are scheduled during the day, running Mondays to Fridays and include transport to and from home. Carers are also welcome to join in.

Some of our outings have included picnics in the park, visits to community sites such as the NSW Art Gallery, Gallipoli mosque, Mary MacKillop church, Nan Tien temple, Cockatoo Island and some wonderful corporate sponsored harbour cruises and Food-a-licious tours, made possible by United Way.

We also see our connection through the outings as an opportunity to keep a

professional eye on our clients' health and wellbeing and be able to provide assistance with independent information and resources where appropriate. The Mini-Outings have also branched out into 2 other specific programs called the Men's Group and our Alive and Kicking Program.

The benefits of men gathering and meeting as a single gender group are widely recognised, particularly in the post-retirement phase of life. The Men's Group is a social group specifically for men. We offer various activities like gardening, games, sports and recreation, to give older men the opportunity to meet new friends and involve themselves in the community. This group outing occurs once a month. In 2012 the men-only outings included a guided tour of the Sydney Cricket Ground, a bus trip to Elizabeth Bay, a visit to Homebush Bay golf driving range and lunch at Cronulla Surf Club.

The Alive and Kicking Program offers activities that promote healthy ageing through a series of activities that focus on mind, body and spirit.



Some of our activities have included gentle exercise sessions, Zumba, laughter yoga, brain training exercises, Wii games including interactive bowling competitions, bingo and art classes.

This year our Mini-Outings have gone from strength to strength. They have developed from 30 clients in 2006 running one to two days a week to 210 clients in 2012. We are now averaging a consistent group of 8 clients per outing. Some outings cater for larger groups of up to 16 people, which is made possible with the support of Ashfield Council, and the use of their 19-seater vehicle.

### **Community Visitors**

The Community Visitors Scheme links volunteers with people who live in Residential Aged Care facilities for social support visits. These visits aim to reduce social isolation and provide a link to the wider community. Inner West Neighbour Aid is currently funded for 16 clients and has volunteers matched with clients in 8 Residential Aged Care facilities in the Inner West. Volunteers visit on a fortnightly basis and we successfully match people with similar interests.

### **Assisted Online Shopping**

Assisted Online Shopping is a recent development that supports clients who are unable to access local shops and may need assistance to access a computer to order their groceries on line. This year staff successfully supported 8 clients with Assisted Online Shopping.

### **Personal Alarms**

Inner West Neighbour Aid can arrange the installation of a personal alarm and monitoring service for people who feel vulnerable to falls and accidents in their home. With the support of Club and Council grants we are able to cover the costs of the initial installation, however any ongoing monitoring fees are met by the client. This year we supported 63 people with personal alarm systems.

### **Beyond Home**

We provide assistance to people who may be ready and/or need to move into a residential care setting. Staff members are able to provide support and advocacy to clients to understand their options and assistance with project managing the actual relocation.

“I have never been so happy, and you can tell them that. It’s a change from the cranky bird that used to tramp around the place.”

**“You couldn’t suggest anything to make it better; it’s perfect.”**

And from a 95 year old client.  
“It’s so marvellous. I’ve been to such places I’ve never been before. To be organised for me - it is a godsend. I love it!”

**“I love having my volunteer visit me, it makes me feel special, and all the staff here love her too.”**

**"My volunteer really is an angel who brightens my day"**

"I wish to thank you most sincerely for assistance with my Accident Alert system."

**"I feel such profound relief at having this button at my hand if necessary. Until I had it, I hadn't realised how worried I had been about falling. Thank you so much... The downside being I'll have to cut out those fashionable plunging necklines"**

## **Home Visiting**

Home Visiting exemplifies our Mission Statement, as it is about connecting people who are passionate about helping others with people who need support to live safely and independently at home and remain active in our community. With our Home Visiting service we aim to connect a volunteer with a person who may be finding it challenging for a variety of reasons to access the wider community. This year we matched 30 volunteers with socially isolated older people.

## **One-on-One Support**

Occasionally, someone may have needs that are too complex for a volunteer Home Visitor. In this instance we offer a visit from one of our Social Support Specialists. This year we provided One-on-One support for 12 people.

Our One-on-One program also included a project called Goal Attainment and Personal Skills (GAPS) which was aimed at facilitating independent living skills and links to the community. For example, this year we successfully assisted someone to access their local library so that he could cook a special, culturally appropriate meal for his friends.

This was a wonderful outcome for a man who is often confined to a wheelchair – and the meal was scrumptious too!

## **Unlicensed Boarding House Project**

The Unlicensed Boarding House project was focused on supporting residents from Mary MacKillop Outreach's boarding houses to access the community via social outings. These outings included visits to local shopping centres, parks and planning and preparing a BBQ. Due to funding constraints, the Boarding House project will end in July 2012. The success of the project can be measured in the new friendships that were forged between residents and the wonderful celebration that was held to mark the end of this project.

## OUR STAFF

The team of staff at Inner West Neighbour Aid supports the Management Committee in its governance role and as a collective provides leadership, management, operational responsibility, continuous improvement and risk management of all services.

**Allison Yee-Brogan** General Manager

**John Uychoco** Deputy Manager

**Patrick Murray** Volunteer and Projects Coordinator

**Kym Tremaine** Home Maintenance Coordinator

**Jackie Walters** Social Support Coordinator

**Indah Kusumawati** Finance and Administration Assistant

**Roman Deguchi** Garden Aid Team Leader/  
Senior Pets for Senior People Coordinator

**Steven Walker** Garden Aid and Lawn Mowing Team Leader

**Lara Butler** Social Support Worker

**Amanda Ibrahim** Social Support Worker

**Rebecca Holland**, Manager

*Resigned April 2012*

**Michelle Ishak**, Social Support Worker

*Resigned April 2012*

**Suzette Moore**, Finance Assistant

*Temporary Maternity Leave Position April - June 2012*

**Melanie Rang**, Garden Aid Team Leader

*Resigned December 2011*

**Claire Urban**, Volunteer Coordinator

*Resigned September 2011*

## EXTERNAL COMMITTEES AND FORUMS

At Inner West Neighbour Aid we actively encourage our Staff to participate in Committees that provide opportunities to share our knowledge and be involved in the wider community.

### **Burwood Club Grants Committee**

Allison Yee-Brogan

### **Inner West Disability Services Forum**

John Uychoco

### **Inner West Home and Community Care Forum**

John Uychoco and Allison Yee-Brogan

### **Neighbour Aid Social Support Association**

John Uychoco and Allison Yee-Brogan

### **Volunteer Network Forum**

Patrick Murray

### **Volunteer Expo Committee**

Patrick Murray

# THANK YOU TO OUR FUNDING BODIES AND SUPPORTERS

Thank you to our funding bodies and supporters. We are inspired by their spirit of generosity as their support allows us to reach more clients, offer improved services and contributes to service growth.

## FUNDING SOURCES

Inner West Neighbour Aid is a Home and Community Care (HACC) funded service, a joint Commonwealth and State/Territory Program providing funding and assistance for Australians in need.

### Federal Government

Department of Health and Ageing  
Department of Veterans' Affairs  
State Government  
Department of Family and Community Services (Ageing, Disability and Home Care)  
Department of Education and Communities (Sport and Recreation)

### Local Government

Ashfield Council  
City of Canada Bay Council  
Strathfield Council

### Clubs

Ashfield RSL Club  
Burwood RSL Club  
Canada Bay Club  
Club Ashfield  
Strathfield Sports Club  
West's Ashfield

### Business and Corporate Supporters

AMP  
Fantastic Furniture  
Mickey Mouse Club Indoor  
Microsoft  
Pfizer

### Philanthropic Organisations

United Way

### Partners

Croydon Park Public School  
Sydney Dogs and Cats Home  
Mary MacKillop Outreach  
Presbyterian Aged Care, Inner West  
Community Care Services

### Individual Donors

Wayne Ardley  
Helen Chan  
Amy Fisher  
Adriana Franic  
Linda Garry (in-kind donation)  
Ronald Hammerton  
Sarah Harlender  
Valerie Kenny  
Lisa Leotta  
Joe Szima  
Beryl Thurston  
Xiaoyan Yao



## FINANCIALS

### TREASURER'S REPORT

This financial year Inner West Neighbour Aid reported a net surplus of \$80,919 with net assets worth \$212,546. This surplus was largely due to a range of funding, grants and donations received with thanks from local Clubs, Councils and businesses. In addition, our major source of funding from the Department of Family and Community Services (Ageing, Disability and Home Care) constituted 93% of our overall income base.

Inner West Neighbour Aid's financial achievements included a transition from MYOB to Quickbooks accounting system, formalisation of an ongoing lease with the Department of Education for rental of the premises on the grounds of Croydon Park Public School and the development of an internal budgeting and monitoring framework.

We would like to thank Indah Kusumawati and Suzette Moore (temporary maternity leave position) for their dedication and diligence in the Finance and Administration Assistant role.

We also acknowledge the professional audit and accounting services of MNSA Pty Ltd.

**Noel Nallaiah** *Treasurer*

# STATEMENT OF FINANCIAL POSITION

FOR THE YEAR ENDED 30 JUNE 2012

Inner West Neighbour Aid Incorporated  
ABN 20 500 363 056

		<b>2012</b>	<b>2011</b>
		<b>\$</b>	<b>\$</b>
<b>CURRENT ASSETS</b>			
Cash assets	6	202,858	207,265
Receivables	7	846	291
Other assets	8	7,800	830
<b>Total Current Assets</b>		<b>211,504</b>	208,386
<b>NON-CURRENT ASSETS</b>			
Property, plant and equipment	9	102,635	83,437
<b>Total Non-Current Assets</b>		<b>102,635</b>	83,437
<b>TOTAL ASSETS</b>		<b>314,139</b>	291,823
<b>CURRENT LIABILITIES</b>			
Payables	10	87,290	140,537
Provisions	11	14,303	14,303
<b>Total Current Liabilities</b>		<b>101,593</b>	154,840
<b>NON-CURRENT LIABILITIES</b>			
Provisions (LSL)	12	-	5,355
		-	5,355
<b>Total Non-Current Liabilities</b>		-	5,355
<b>TOTAL LIABILITIES</b>		<b>101,593</b>	160,195
<b>NET ASSETS</b>		<b>212,546</b>	131,628
<b>MEMBERS' FUNDS</b>			
Retained profits		212,546	131,628
<b>Total Members' Funds</b>		<b>212,546</b>	131,628

*A copy of our comprehensive audited Financial Statements for the year ended 30 June 2012 can be obtained upon request.*

# INCOME STATEMENT

## FOR THE YEAR ENDED 30 JUNE 2012

Inner West Neighbour Aid Incorporated

ABN 20 500 363 056

	<b>2012</b>	2011
	<b>\$</b>	\$
<b>INCOME</b>		
Gross receipts	762,496	651,097
Grants received	36,552	36,307
Donations	3,672	2,337
Service fees	10,972	10,799
Membership fees	3,771	229
Sundry income	34	20,167
Interest received	108	100
Other income	-	2,140
Insurance claims	-	-
Profit on assets	-	-
Utility	4,273	-
Leasing of fixed assets	-	30,136
Sale of motor vehicle	-	18,583
Client contributions	-	1,109
<b>Total Income</b>	<b>821,878</b>	773,004
<b>EXPENSES</b>		
Administration Expenses	34,776	26,497
Management Expenses	114,445	139,824
Program Expenses	126,000	118,895
Staff Expenses	442,991	431,991
Volunteer Expenses	22,747	11,934
<b>Total Expenses</b>	<b>740,959</b>	729,141
Profit (loss) from ordinary activities before income tax	80,919	43,863
Income tax expense relating to ordinary activities	-	-
Net profit/(loss) from ordinary activities after income tax	80,919	43,863
Retained profits at the beginning of the financial year	131,628	87,767
Restatement of retained earnings brought forward	(1)	(2)
<b>Retained profits at the end of the financial year</b>	<b>212,546</b>	131,628

*A copy of our comprehensive audited Financial Statements for the year ended 30 June 2012 can be obtained upon request.*

# COMPILATION REPORT TO INNER WEST NEIGHBOUR AID

## Scope

On the basis of the information provided by the Committee of Management of Inner West Neighbour Aid Incorporated, we have compiled, in accordance with APS 9 Statement of Compilation of Financial Reports the special purpose financial report of Inner West Neighbour Aid Incorporated for the period ended 30 June 2012 comprising the attached Income Statement and Statement of Financial Position.

The specific purpose for which the special purpose financial report has been prepared is to provide financial information to the members. Accounting Standards and other mandatory professional reporting requirements have not been adopted in the preparation of the special purpose financial report.

The Management Committee is solely responsible for the information contained in the special purpose financial report and has determined that the accounting policies used are consistent with the financial reporting requirements of the Association's Constitution

and are appropriate to meet the needs of the Management Committee for the purposes of complying with the Association's Constitution.

Our procedures use accounting expertise to collect, classify and summarise the financial information which the Management Committee provided into a financial report. These procedures have been undertaken to form an opinion as to whether, in all material aspects, the accounts are presented fairly in accordance with accounting standards and relevant statutory requirements as to present a view of the organisation which is consistent with its understanding of its financial position and the results of its operations.

The opinion expressed in this report has been formed on the above basis.

## Audit Opinion

In our opinion, the accounts are properly drawn up so as to give a true and fair view of the state of the affairs of the organisation as at 30 June 2012 and the results of the organisation's activities for the year ended

on that date and that it is in accordance with applicable accounting standards.



**Mark Schiliro**

Director MNSA Pty Ltd

**DATED THIS 28 DAY OF SEPTEMBER 2012**



**MNSA Pty Ltd**





**PLEASE  
DONATE**

## LIVING....CONNECTING...COMMUNITY SPIRIT

Inner West Neighbour Aid holds a charitable fundraising authority under the Charitable Fundraising Act 1991 and is a Public Benevolent Institution under the Income Tax Assessment Act 1997.

Any gifts \$2 and over are tax deductible. We want to connect with like-minded people and organisations keen to make a difference and give back to the community.

### **DONATE ONLINE**

Donations can be made online.  
Visit [www.iwna.com.au](http://www.iwna.com.au)

### **DONATE BY PHONE**

Please call our office on **02 9799 5099**.

### **DONATE BY MAIL**

To donate by mail, please send a cheque or money order (no cash) along with your name and address details to:

**Inner West Neighbour Aid  
PO Box 247, Croydon Park NSW 2133**

Please make your cheque and money order payable to Inner West Neighbour Aid Inc.

### **Think about leaving a bequest**

If you would like to leave a gift in your will, please call our office on 02 9799 5099.

### **DONATE YOUR TIME – VOLUNTEER**

Please call our office on 02 9799 5099 or email [patrick@iwna.com.au](mailto:patrick@iwna.com.au) to speak with our Volunteer and Projects Coordinator

## ACKNOWLEDGEMENTS

### REGISTERED COMPANY AUDITOR



#### **MNSA Pty Ltd**

Level 2, 333 George Street  
Sydney NSW 2000

**P** 02 9299 0901 **F** 02 9299 8104

**www.mnsa.com.au**

### BANK



#### **Commonwealth Bank of Australia**

80 Ramsay St  
Haberfield NSW 2045

**P** 02 9798-8111 **F** 02 9799-8919

**www.commbank.com.au**



#### **Community Sector Banking**

Level 1, 251 – 253 Princes Highway  
Corrima NSW 2518

**P** 1300 272 265 **F** 02 4255 8420

**www.communitysectorbanking.com.au**

### ANNUAL REPORT DESIGN & PRINTING



#### **Nine Design**

Level 1/264 Parramatta Road  
Stanmore NSW 2048

**P** 02 9564 1822 **F** 02 9564 1833

**www.ninedesign.com.au**



**Inner West Neighbour Aid**

is an Incorporated Association.

ABN 20 550 363 056

Office is located on the grounds of Croydon  
Park Public School via Beresford Ave entrance.

PO Box 247 Croydon Park NSW 2133

P 02 9799 5099 | F 02 9799 5201

[www.iwna.com.au](http://www.iwna.com.au)

INNER WEST  
**neighbour**  **aid**